

# Hyundai iX20

1.4l, 1.6l

Year: 2011-

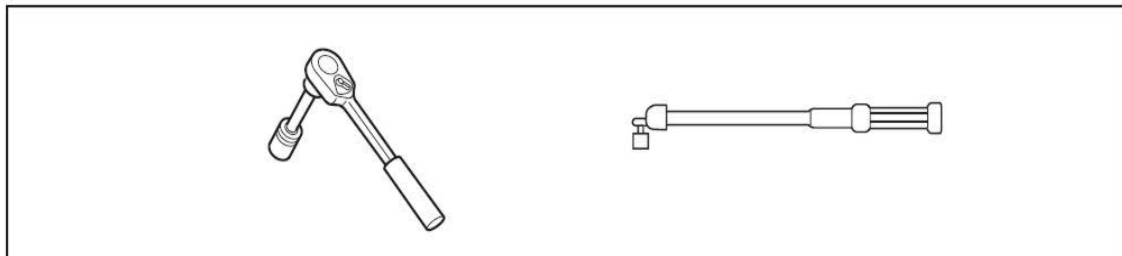
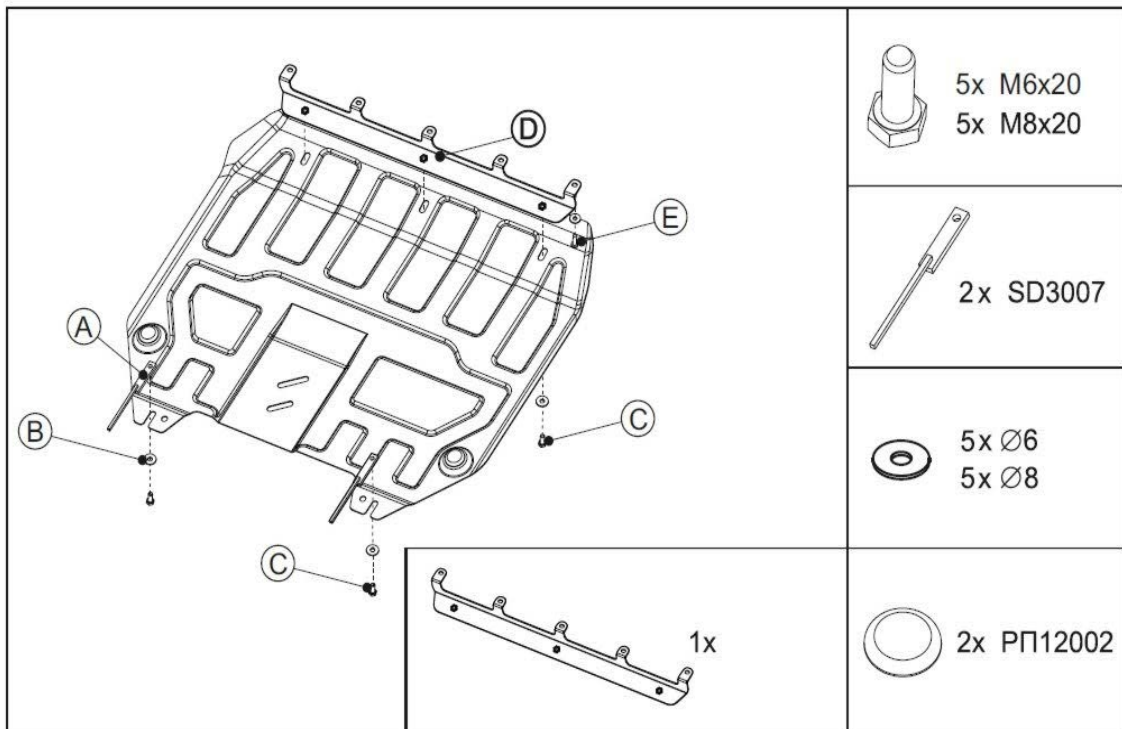
10.1980

## Genuine Accessories Installation Instructions



# Hyundai iX20

10.1980

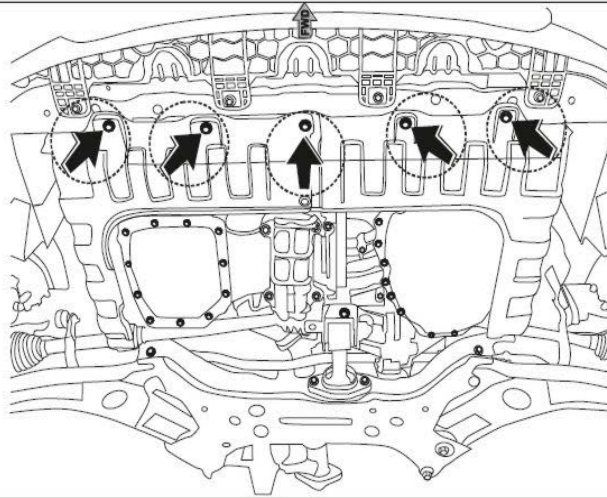


**GB**

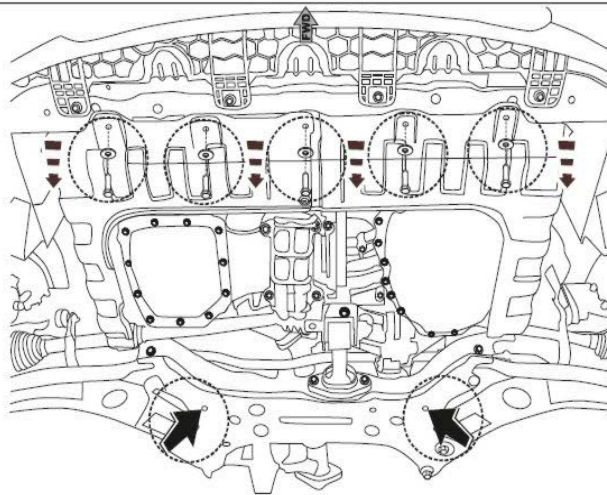
Read this mounting manual carefully, before you start the installation. Warranty is granted only when installation is done correctly by your KIA dealer.

7

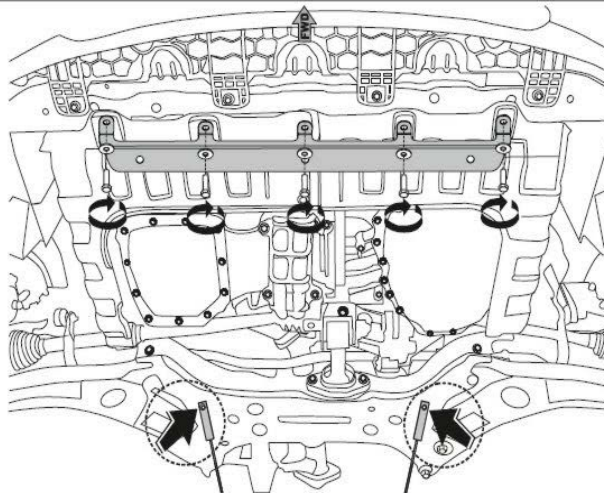
1



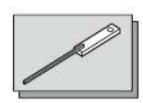
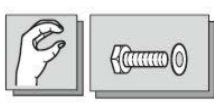
2



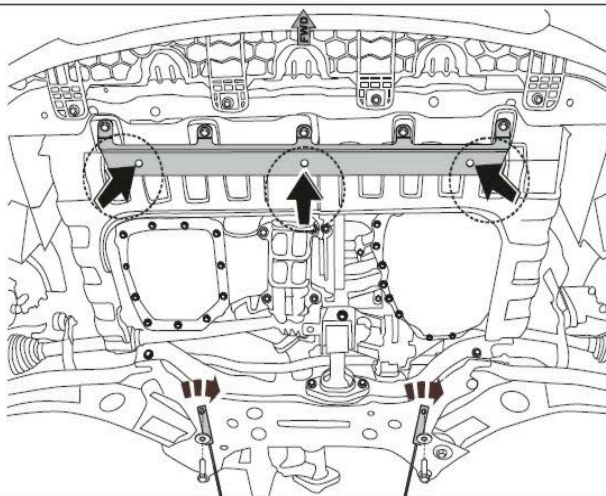
3



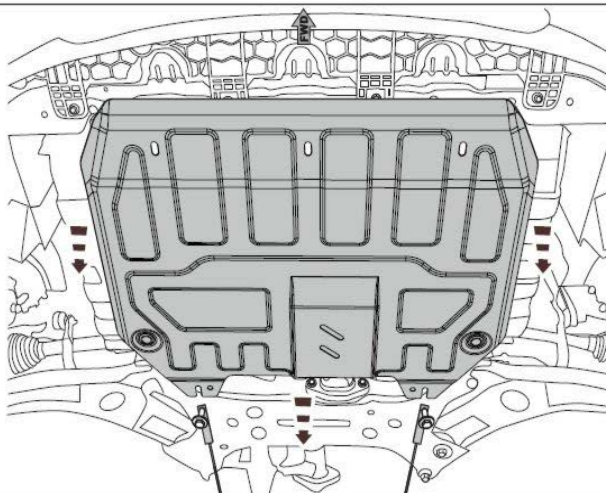
9,8 Nm



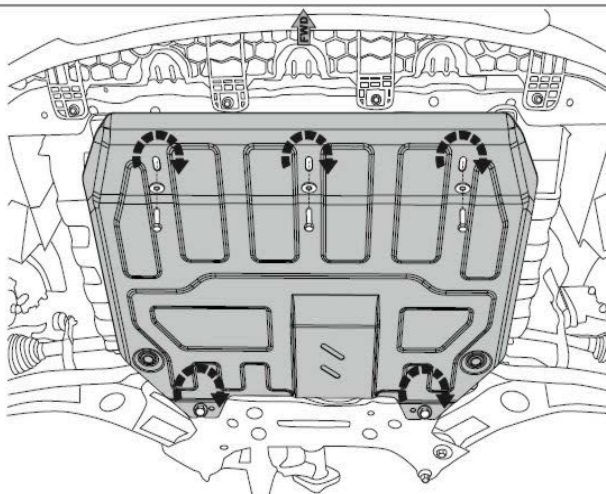
4



5



6



7

